

Affinity Place, Borehamwood

£1,650 Per Month ()

VILLAGE
E S T A T E S



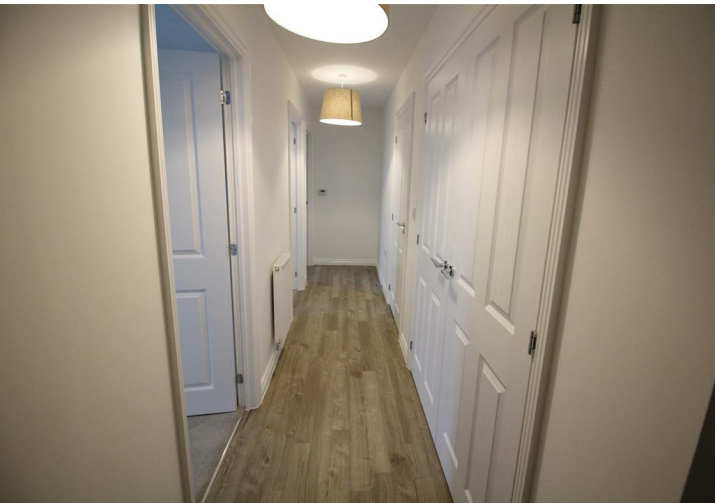
****AVAILABLE END JANUARY****Offered To Let is this 2 bedroom PENTHOUSE (5th) floor luxury apartment in Borehamwood. Just a short stroll from fantastic amenities including large Tesco Extra, Borehamwood's bustling high street, places of worship, mainline station and perfectly placed for the catchment into the area's best schools including Yavneh College/ and Primary. Available for immediate occupation and boasting an impressive 667 sq ft of accommodation, including :- Entrance hall, Good sized double bedroom, second bedroom, stunning bathroom, and open plan kitchen/living/dining area with fitted integrated appliances including dishwasher, washer dryer, and fridge/freezer, oven and gas hob. Externally there is a balcony accessed from the entertaining room and an allocated car parking space for 1 car. Early viewing recommended.

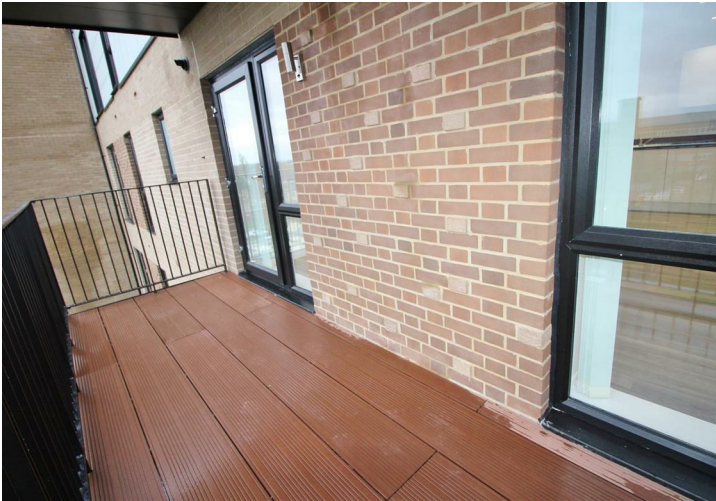
020 3764 2222
www.village-estates.co.uk

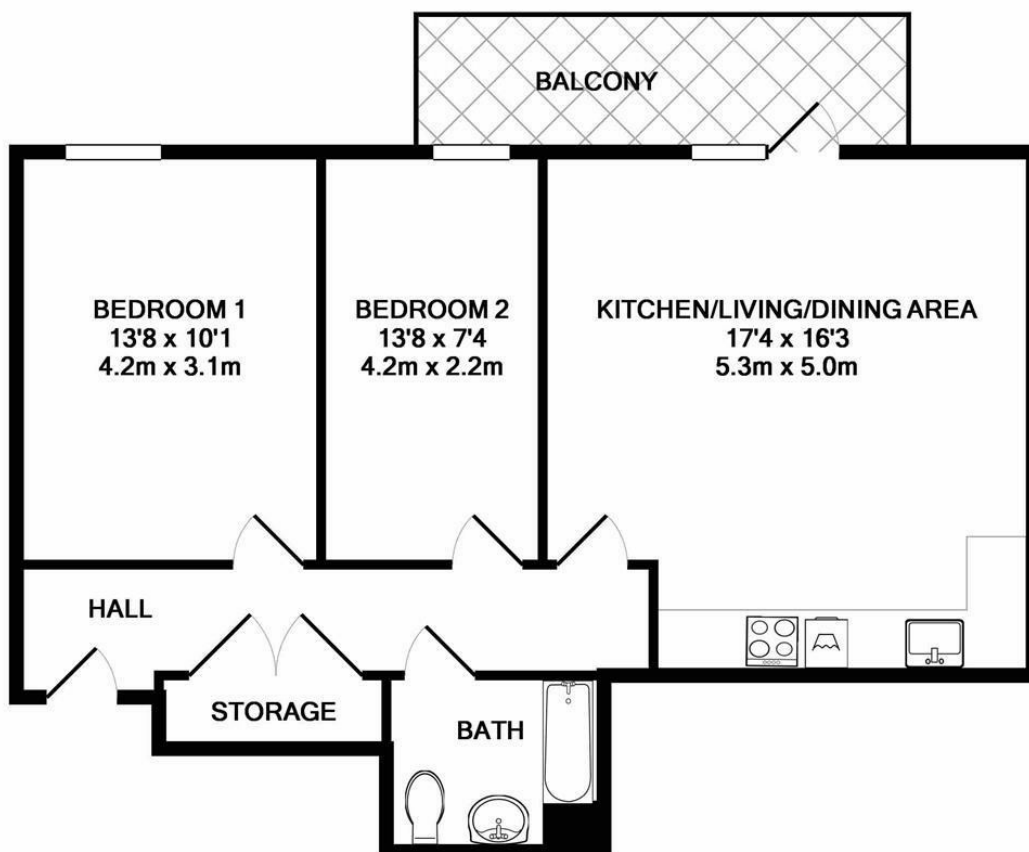


Village Estates
The Corner Shop High Street, Elstree
Herts WD6 3BY

Important Note: These particulars do not form part of any contract. All measurements are approximate and should not be relied upon. All prices quoted are strictly subject to contract.



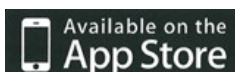




TOTAL APPROX. FLOOR AREA 667 SQ.FT. (62.0 SQ.M.)

Whilst every attempt has been made to ensure the accuracy of the floor plan contained here, measurements of doors, windows, rooms and any other items are approximate and no responsibility is taken for any error, omission, or mis-statement. This plan is for illustrative purposes only and should be used as such by any prospective purchaser. The services, systems and appliances shown have not been tested and no guarantee as to their operability or efficiency can be given

Made with Metropix ©2018



Energy Efficiency Rating		
	Current	Potential
Very energy efficient - lower running costs		
(92 plus) A		
(81-91) B	85	85
(69-80) C		
(55-68) D		
(39-54) E		
(21-38) F		
(1-20) G		
Not energy efficient - higher running costs		
England & Wales		EU Directive 2002/91/EC